

**KNAPHEIDE**  
SINCE 1848



GENERAL MOTORS  
**KUV BODIES**



# KNAPHEIDE KUV BODIES



## KNAPHEIDE UTILITY VAN

Working out of a Knapheide KUV keeps you organized and productive. Large perimeter bins are easy to access and keep your parts and tools separated into easy-to-manage spaces.

A spacious cargo storage area with corrugated steel floor for transporting drywall, larger tools, water heater, and oversized items.

## KUV BODIES

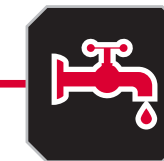
The Knapheide KUV is available in multiple heights and lengths for different applications. It is designed to increase productivity and efficiency through better organization of parts and equipment for specialty contractors, including plumbers, HVACR technicians, electricians, and more.

No more looking for what you need — just grab and go!

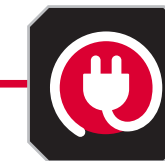
## POPULAR VOCATIONS



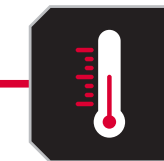
CONSTRUCTION



PLUMBING



ELECTRICAL



HVACR

**A. DOUBLE PANELED DOORS**

made of galvanized steel (14-gauge outer panel, 20-gauge inner panel) are reinforced with internal braces for durability

**B. TWO CONDUIT CHUTES**

to transport copper pipes, PVC, and conduit

**C. AUTOMOTIVE-QUALITY, ROTARY-STYLE LATCHES**

make opening and closing easy

**D. ELECTRODEPOSITION PRIME-PAINT SYSTEM**

provides superior corrosion resistance

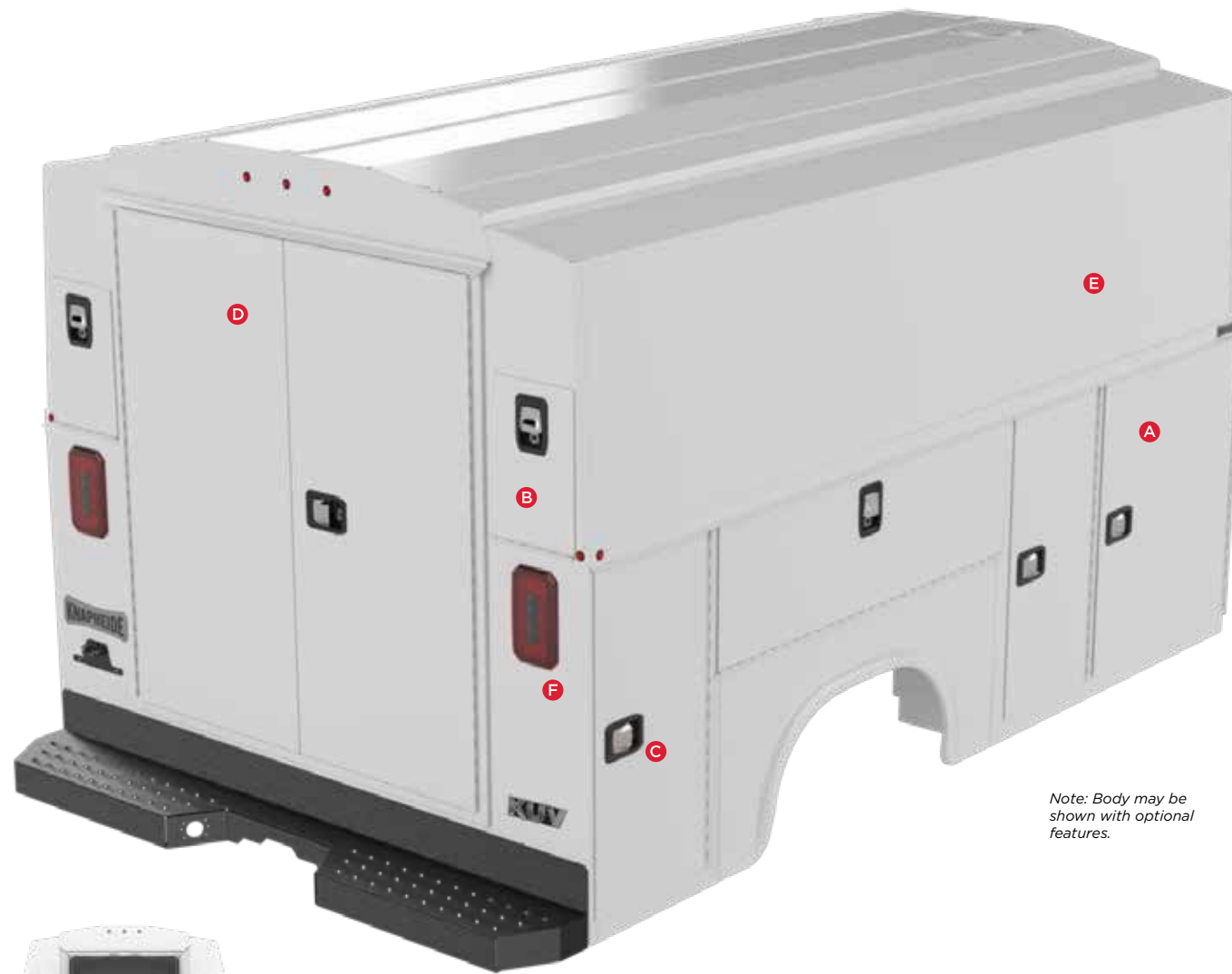
**E. FLAT PANEL SPACE**

provides rolling billboard to promote business

**F. INTEGRATED LED S/T/T AND B/U, LED STROBE OPTION\***

with (8) selectable patterns and built-in reflectivity for additional safety\*\*

\*Additional wire harness required for strobe lights  
\*\*Covered under 3-year limited warranty



Note: Body may be shown with optional features.

COMPARTMENT FEATURES



**DOUBLE-SPRING OVER-CENTER RETAINER**

on vertical compartment doors eliminate involuntary swing



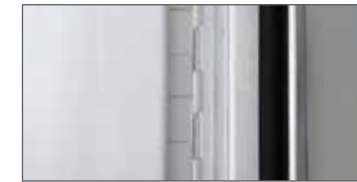
**NEOPRENE DOOR SEALS**

protect compartments from the weather



**MASTER LOCKING SYSTEM**

for piece of mind — locks down all of the side compartments in one move



**CONTINUOUS STAINLESS STEEL HINGES**

are pry-proof and corrosion-resistant



**AERODYNAMIC WIND DEFLECTOR**

Mounted on body above cab

Standard on DL, DH, and SH models only



**CARGO AREA AND CONDUIT CHUTE CAPACITY**

10' in 129" bodies

12' in 153" bodies

FEATURES NOT SHOWN

**TWO INTERIOR LED DOME LIGHTS**

in cargo area with light switch inside the cargo doors

**GRAB HANDLE**  
(rear right)

**COMPARTMENTS CAN BE LOCKED INDEPENDENTLY**

for maximum security

**ALUMINUM FUEL CUP**

**REFINED ABS PARTITION**

is equipped with a sliding cab access door and window. The door's slam latch can be locked from the cab and secured in either an open or closed position

STANDARD SHELVING



**STREET AND CURB SIDE FRONT VERTICAL COMPARTMENTS**

Two adjustable divider shelves and dividers, with a 250-lb. capacity



**STREET AND CURB SIDE FULL HEIGHT REAR VERTICAL COMPARTMENTS**

One adjustable divider shelf and dividers, with a 250-lb. capacity



**CURB SIDE HORIZONTAL COMPARTMENT**

One adjustable divider shelf and dividers, with a 250-lb. capacity





## POPULAR OPTIONS



**POWER LOCKS**



**CODEABLE PADLOCK**



**UPPER SIDE GLASS**

*Available for Low and High Roof models. Not available for Ultra-Low models.*



**POWER LIFTGATE**

*Not available on SRW models*



**LED COMPARTMENT LIGHTING**



**MECHANICS VISE BRACKET**

*Vise sold separately*



**REAR VISION CAMERA**



**ALUMINUM DRAWERS**



**SORTIMO**



**CORNER MOUNTED CARGO CRANE**



**SIDE ACCESS DOOR**

*Available for Low and High Roof models. Not available for Ultra-Low models.*



**3 BOW LADDER RACK**



**REAR DOOR WINDOWS**



**CLASS V RECEIVER HITCH**



**PULL OUT TRAY**



**SIDE MOUNT LADDER RACK**



**DROP-DOWN LADDER RACK**

*Prime Design*



# MODEL OPTIONS

## KUV BODIES

BODY MODEL	CHASSIS MODEL	WHEELBASE	CHASSIS WEIGHT <sup>1</sup>	CHASSIS GVWR	BULK CARGO AREA	TOTAL STORAGE	COMPARTMENT AREA	BODY HEIGHT	BODY WEIGHT	PAY-LOAD
KUV129SU	G33503	139"	4,688 lb.	9,900	265 cu. ft.	335 cu. ft.	70 cu. ft.	70"	1,731 lb.	3,394 lb.
KUV129SL	G33503	139"	4,688 lb.	9,900	318 cu. ft.	388 cu. ft.	70 cu. ft.	78"	1,873 lb.	3,256 lb.
KUV129SH	G33503	139"	4,688 lb.	9,900	403 cu. ft.	473 cu. ft.	70 cu. ft.	90"	2,053 lb.	3,076 lb.
KUV129DL	G33503	139"	4,975 lb.	12,300	355 cu. ft.	425 cu. ft.	70 cu. ft.	78"	2,047 lb.	5,189 lb.
KUV129D20L	G33503	139"	4,975 lb.	12,300	329 cu. ft.	425 cu. ft.	96 cu. ft.	78"	2,059 lb.	5,177 lb.
KUV129DH	G33503	139"	4,975 lb.	12,300	422 cu. ft.	492 cu. ft.	70 cu. ft.	90"	2,198 lb.	5,038 lb.
KUV129D20H	G33503	139"	4,975 lb.	12,300	396 cu. ft.	492 cu. ft.	96 cu. ft.	90"	2,222 lb.	4,913 lb.
KUV153DL	G33803	159"	5,076 lb.	12,300	421 cu. ft.	506 cu. ft.	85 cu. ft.	78"	2,347 lb.	4,788 lb.
KUV153D20L	G33803	159"	5,076 lb.	12,300	389 cu. ft.	506 cu. ft.	117 cu. ft.	78"	2,382 lb.	4,753 lb.
KUV153DH	G33803	159"	5,076 lb.	12,300	500 cu. ft.	585 cu. ft.	85 cu. ft.	90"	2,517 lb.	4,618 lb.
KUV153D20H	G33803	159"	5,076 lb.	12,300	468 cu. ft.	585 cu. ft.	117 cu. ft.	90"	2,553 lb.	4,582 lb.

Models above are designed to fit Chassis Model G33503 and G33803. Please check Knapheide Product Guide for fitment.

<sup>1</sup> Chassis weight calculated with 6.0L gas engine. Optional engines and other chassis may affect chassis weight.

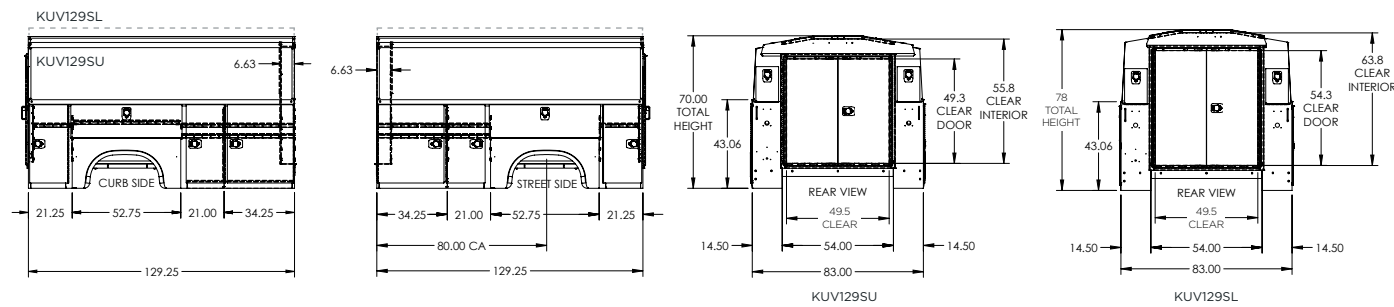
\*\*"S" model denotes single rear wheel with 14.5" deep compartments.

\*\*\*"D" model denotes dual rear wheel with 14.5" deep compartments.

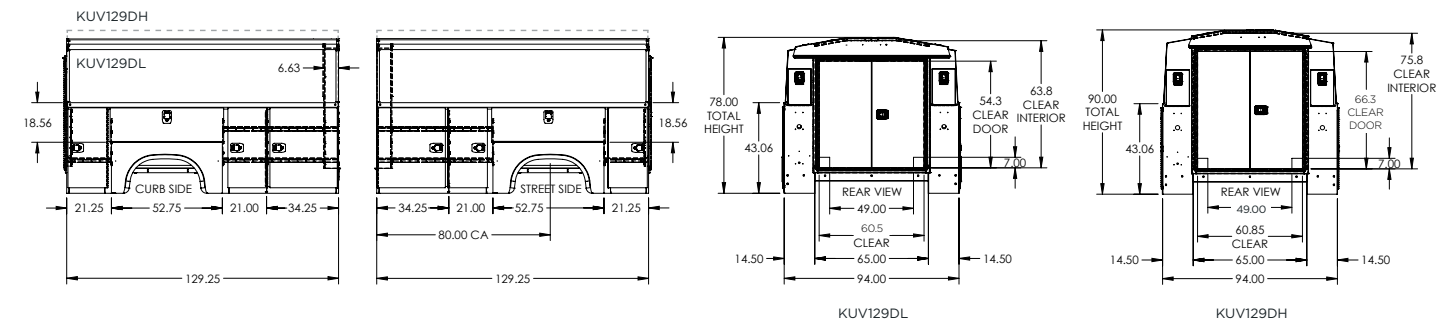
\*\*\*"D20" model denotes dual rear wheel with 20" deep compartments.



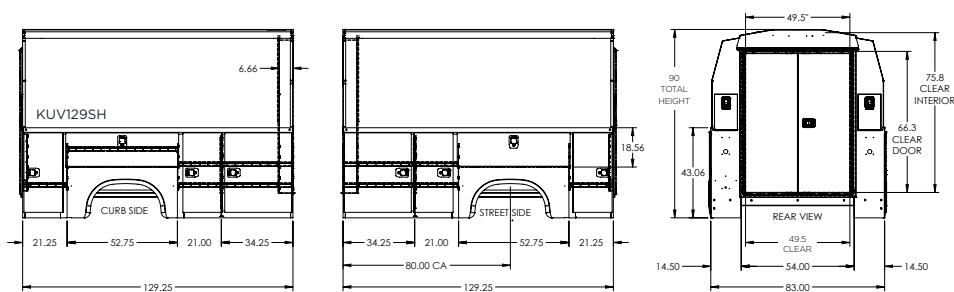
## KUV129SU / KUV129SL



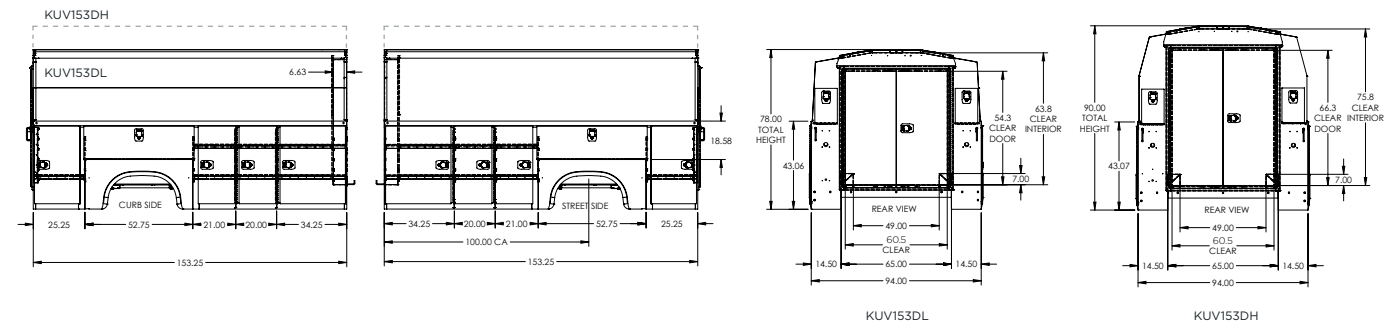
## KUV129DL / KUV129DH



## KUV129SH



## KUV153DL / KUV153DH





# COMMITMENT TO CORROSION RESISTANCE

Corrosion won't be a concern when you buy quality Knapheide products. To give you the best corrosion protection, we utilize a state-of-the-art, custom-designed, 12-step, SST cathodic electrodeposition finishing system, called "E-Coat."

It bonds prime paint to steel by an electroplating process to give you a superior coat of primer, resulting in better corrosion protection compared to spraying methods.

This system allows us to create products with the highest level of corrosion resistance available.



FOLLOW US  
LIKE US  
TAG US



## SIX YEAR, LIMITED TIME WARRANTY



**NO RUST  
THROUGH**



**DOOR HINGES  
WILL NOT FAIL OR  
COME OFF BODY**



**LATCHES AND LOCK  
CYLINDERS WILL NOT  
FAIL TO OPERATE**



**SHELVES WILL NOT  
BEND UNDER MAX.  
LOAD OF 250 LBS.**

TO LEARN MORE VISIT  
[www.knapheide.com/warranty](http://www.knapheide.com/warranty)



# NEVER SETTLE

If you are going to be a leader, it takes more than building a high-quality product. It means never being totally satisfied with that product, no matter how high quality it may be. It requires constant vigilance and a willingness to take a chance on something new. And it means exceeding expectations every time. As the industry changes, one thing never will—our commitment to making customers like you as productive and efficient as possible. We know you don't settle, and we don't either. That's why we want you never to settle for anything less than Knapheide on the back of your truck.

**KNAPHEIDE. NEVER SETTLE.**



The Knapheide Manufacturing Company  
1848 Westphalia Strasse | Quincy, IL 62305

**217-222-7131**

**[www.knapheide.com](http://www.knapheide.com)**