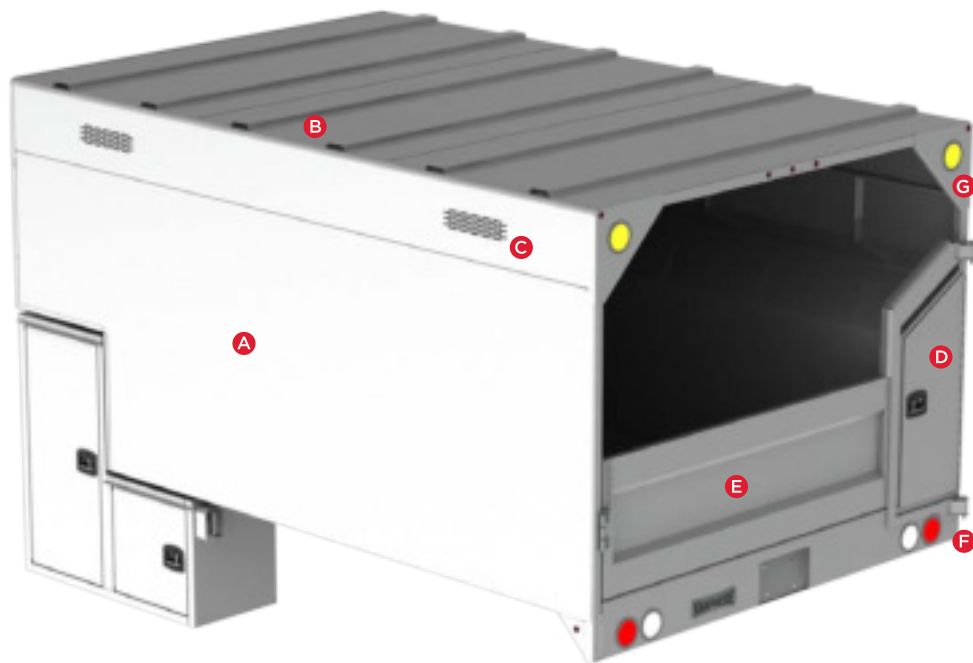


// KNAPHEIDE

FORESTRY BODIES



**Body shown with optional equipment.*

// STANDARD FEATURES

- A** 14-gauge galvanized smooth panels are excellent for advertising graphics
- B** 14-gauge galvanized roof panel reinforced with integrated formed hat sections
- C** Punched vents in upper side panels
- D** Ladder box with full length pole pruner shelf and lockable access door on curbside
- E** 24" tall, 16-gauge galvanized, double-panel tailgate swings open 270 degrees and latches in the open position
- F** Recessed LED lights to meet DOT standards
- G** Strobe lights on front and rear of body

Other features not shown:

- Electrodeposition prime-paint system provides superior corrosion resistance
- Bodies are fully protected with Knapheide's water based undercoat
- Floor is constructed of 7" structural long sills, 12-gauge floor plate and 3" structural channel cross sills

// STANDARD FORESTRY BODY STORAGE PACK

- One full width shelf is 54" long, centered side to side
- Three combination stationary/swivel hooks are mounted in the curbside compartment
- Recessed hinges create a pry resistant compartment
- Electrodeposition prime-paint system provides superior corrosion resistance
- L-Pack lower compartment has no interior wall for full width utilization between both compartments
- All packs include 3 point T-Handles and master lock system to ensure equipment is safely stowed away



// FORESTRY STORAGE PACKS

MODEL	STYLE	PACK LENGTH	PACK WIDTH	HEIGHT	UNDERBODY BOX DEPTH	UNDERBODY BOX WIDTH	UNDERBODY BOX HEIGHT	WEIGHT
KPF-944850	L-Pack	94"	48"	50"	20"	24"	24"	598 lb.

// POPULAR OPTIONS



COAL TAR INTERIOR



CONE HOLDER



FORESTRY CHOCK HOLDERS

NOT PICTURED:
- Rear Barn Doors
- Hitch

// AVAILABLE MODELS

MODEL	BODY LENGTH	STYLE	MINIMUM RECOMMENDED CHASSIS GVWR	TOTAL CAPACITY	USABLE CAPACITY	EXTERIOR LENGTH	INTERIOR HEIGHT	NET WEIGHT
KFBN-1166	11'	Notched	19,500 lb.	15 yd.	13 yd.	135"	66"	2,050 lb.
KFBN-1266	12'	Notched	19,500 lb.	17 yd.	15 yd.	147"	66"	2,225 lb.
KFBS-1266	12'	Straight	19,500 lb.	18 yd.	16 yd.	147"	66"	2,350 lb.

**Notched bodies include a 24" cutout for storage pack*

// COMPATIBLE HOISTS

MODEL	MINIMUM HOIST MODEL	CAPACITY	PUMP DRIVE
KFBN-1166	KHA-1516SF-ED	8.6 tons	Elec/DA
KFBN-1266	KHA-1516SF-ED	8.6 tons	Elec/DA
KFBS-1266	KHA-1520SF-ED	8.6 tons	Elec/DA

// NEVER SETTLE

If you are going to be a leader, it takes more than building a high-quality product. It means never being totally satisfied with that product, no matter how high quality it may be. It requires constant vigilance and a willingness to take a chance on something new. And it means exceeding expectations every time. As the industry changes, one thing never will—our commitment to making customers like you as productive and efficient as possible. We know you don't settle, and we don't either. That's why we want you never to settle for anything less than Knapheide on the back of your truck.

Knapheide. Never settle.

REQUEST A QUOTE

Visit [knapheide.com/quote](https://www.knapheide.com/quote) and fill out the form to receive a quote and additional product information.



The Knapheide Manufacturing Company
1848 Westphalia Strasse | Quincy, IL 62305

217-222-7131
www.knapheide.com

KNAPHEIDE
SINCE 1848