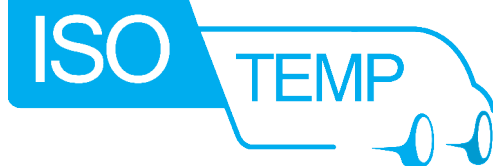


## IsoTemp Solution on Mercedes-Benz Sprinter



### Fully Integrated & Climate Controlled Cargo Isolation System



Customizable with up to 3 separate temperature controlled environments from -5°F to 60°F

Ideal for applications including:

- Food Delivery
- Biomedical Transport
- Catering

\*ATP & HACCP Certified



### STANDARD EQUIPMENT

- Modular, insulated fiberglass panels
- Non-slip floor
- Fully insulated doors
- Floor drain
- Interior lighting (LED ceiling light)

### PRODUCT FEATURES

- Modular kit assembly for high volume upfits
- Best-in-class thermal insulation
- Fiberglass panels are leak-free and easy to clean

### SPECIFICATIONS

Wheelbase	Roof Variants	Cargo Area Volume	Inner Length	Inner Width	Inner Height
144" (L2)	High (H2)	297 cubic ft.	123"	63.8"	70.7"
170" Long Wheel Base (L3)	High (H2)	392 cubic ft.	164"	63.8"	70.7"
170" Long Wheel Base Ext. (L4)	High (H2)	427 cubic ft.	179.7"	63.8"	70.7"

### CLIMATE CONTROL SYSTEM

- Industry standard cooling units available from multiple manufacturers

## IsoTemp Solution on Mercedes-Benz Sprinter

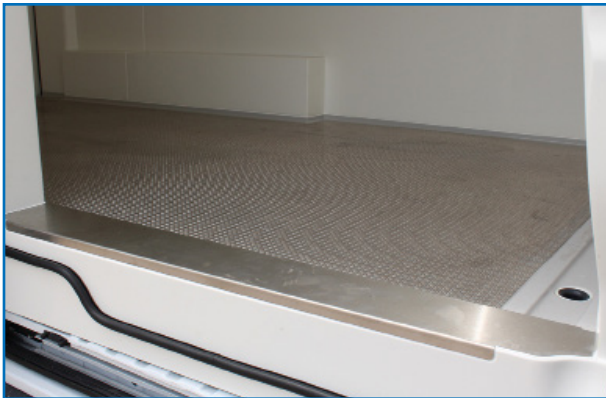
### OPTIONS



- Raised Platform
- Additional door seal for isolated cargo area (standard)



- Clear PVC strip curtains
- Available for side or rear doors



- Stainless steel doorstep protection



- Aluminum fold-down shelves

## IsoTemp Solution on Mercedes-Benz Sprinter

### Thermo King Reefer Application

Van Make	Van Model	Wheelbase	Roof Height	Thermo King Direct Drive Application			
				10 Door Openings Per Day		30 Door Openings Per Day	
				Fresh (35°F)	Frozen (-4°F)	Fresh (35°F)	Frozen (-4°F)
Mercedes-Benz	Sprinter	144 in. (Regular)	High	V200	V300 Max	V200	V520 Max
		170 in. (Long)	High	V200	V520 Max	V300	V520 Max
		170 in. (Long Extended)	High	V200	V520 Max	V300	V520 Max

\*Outside temperature up to 104°F. Check with your sales representative for outside temperatures over 104°F.

\*\*Standard units have suffix "10." The "10" series does not offer power standby.

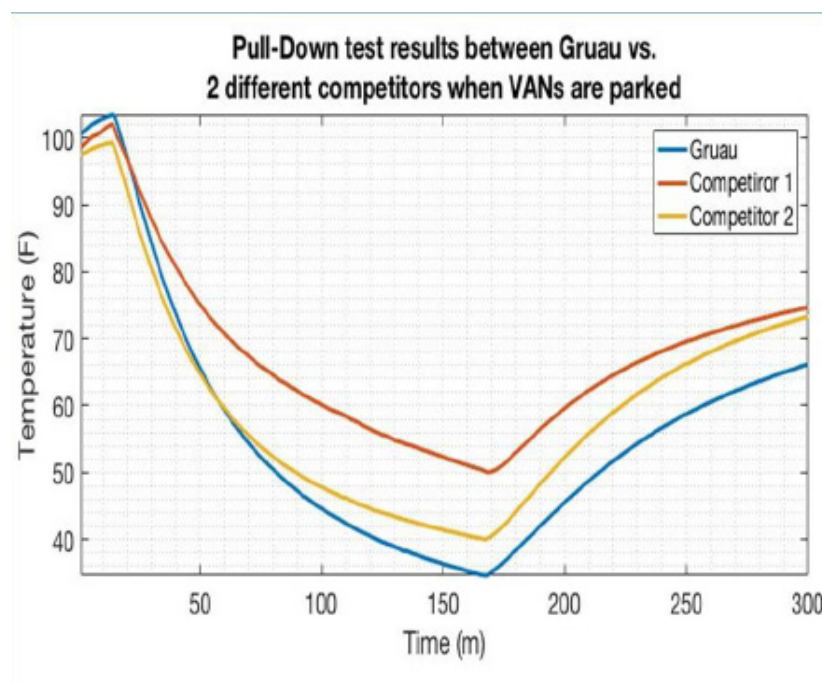
\*\*\*Shore power units are represented with suffix "20." The "20" series is offered with 115/1/60 Hz, 220/1/60 Hz or 230/3/60 Hz power standby options.

### Zanotti Reefer Application

Van Make	Van Model	Wheelbase	Roof Height	Zanotti Reefer Application	
				30 Door Openings Per Day	
				Fresh (35°F)	Frozen (-4°F)
Mercedes-Benz	Sprinter	144 in. (Regular)	High	Z350	Z380X
		170 in. (Long)	High	Z380	Z380X
		170 in. (Long Extended)	High	Z380	Z380X

\*Outside temperature up to 104°F. Check with your sales representative for outside temperatures over 104°F.

\*\*All units represented in this matrix include standby option.



- Gruau with TKV200, 61.8% less powerful than the TK320 of competitors

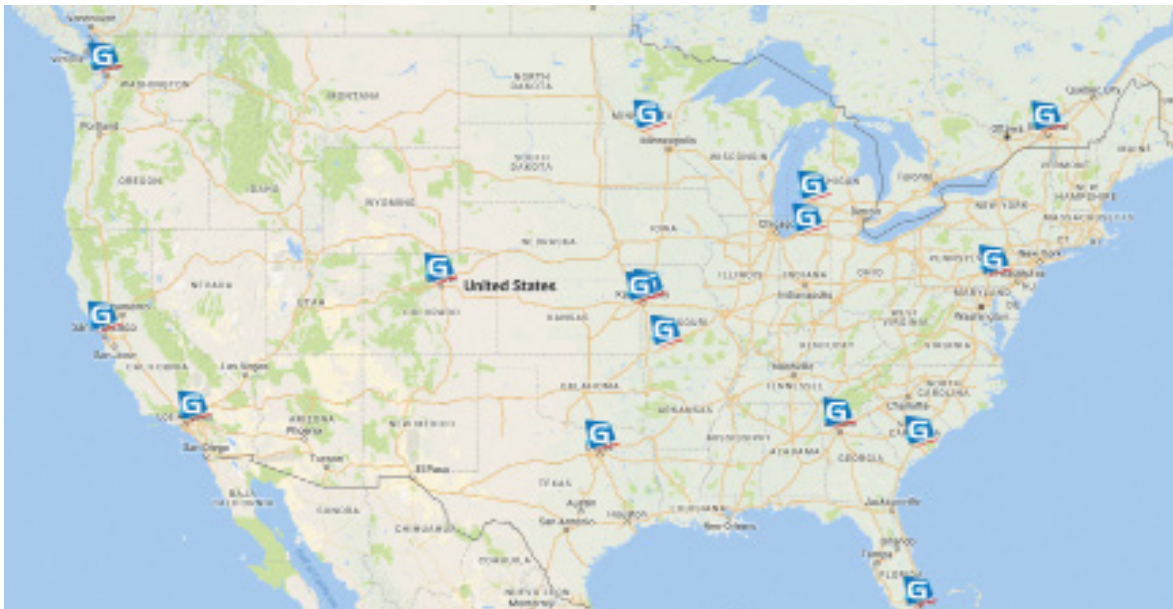
- Gruau operated on idle offering less than 60% of TK200 capacity while the others operated on standby

- Gruau started with 107F and cooled to 34.6 F in 2h 37m (157 minutes)

- Competitor #1 & #2 never reached 35°F fresh despite a more powerful V320 unit.

## About Gruau

Gruau is a French, 5th generation family-owned company that has been in business for over 126 years, specializing in the conversions of light commercial vehicles. With over 1,600 employees and 50,000 conversions per year for customers and OEMs around the world, Gruau is Europe's leading body builder. Its 18 commercial and industrial facilities offer unique design, commercial and industrial capacity.



Gruau is expanding its network with long term quality partners that have been trained both technically and commercially.

### Please contact us for more information

Michel MENIL – CEO

✉ [michel.menil@gruau.com](mailto:michel.menil@gruau.com)

☎ 312-952-2458

Lis CASTOLDI – Sales & Marketing Development

✉ [lis.castoldi@gruau.com](mailto:lis.castoldi@gruau.com)

☎ 312-320-6040